

Spring 2007

(509) 892-0110  
(208) 687-2884  
nphc@icehouse.net



## What's New

We are continuously thankful for your patronage, support and friendships which encourage us as employees, a company and a family. Eleven years ago, we set out to create long term relationships by offering value-filled plant care services and it is fun to see it continue to grow. We appreciate that so many of you spread the word about our services to neighbors, friends and family.

The area's top arborists and horticultural experts are now seeking out employment with our team because they hear that our principles of integrity mean the client, landscape and employee all get treated right. We employ eight Certified Arborists, the highest number in any company in our area. To you, this means knowledgeable professionals caring for your property.

There is genuine concern and awareness over chemicals, and misconceptions can easily become "common knowledge". We address these concerns in *Safe Practices Provide Peace of Mind* on page two. One of our key guiding principles is ethics. Ethical conduct involves professionalism, conservatism and applied wisdom. We want you to be informed, comfortable and confident that you are getting the safest care for your plants. Always feel free to call, email or visit with us in person about your landscape's management plan.



Please "Log In" and give us your email so we can communicate easier. Email it to: nphc@icehouse.net. Thanks!

In Care of Trees,

President

## Mark Your Calendars!

**Arbor Day** April 28th  
**Finch Arboretum** 11am-2pm

Family friendly day of arts, crafts, planting a flower garden and informational green booths. Questions: 509-624-4832

**Garden Expo** May 12th  
**Spok. Comm. College** 9am-5pm

The Inland Empire Gardeners put on this fabulous event. Come for great plants, garden art, information and presentations. We'll be on the south side of the Lair building. See you there!

**The Plant Sale** Saturdays in May  
**Hutton Settlement** 9am-1pm

Sale is every Saturday in May in The Gardeners of Spokane's three greenhouses in the Hutton Settlement at 10255 E. Upriver Drive.

Bonus:

**Plant and Art Sale** May 26th  
**312 W. 9th Ave.** 9am-4pm

Featuring a local Artist, one day only! Questions: Call Don: 509-468-2324

## Vic's Culinary Pick

**Seafood and Pasta by request!**

### Shrimp and Pasta Bordelaise

Serves: 4-6

- 1 Lb. angel hair pasta
- 3/4 cup butter (divided)
- 5 chopped shallots
- 3 Tbsp chopped garlic
- 2 Lbs. Shrimp (31-40 or larger)
- 1/2 cup dry white wine (Chardonnay)
- 1 tsp white pepper
- 1 bunch chopped scallions
- 3 Tbsp. chopped fresh parsley

Cook pasta according to package and drain. Melt 1/2 cup of the butter in a large saute' pan and saute' the shallots for 30 seconds. Add garlic and cook another 30 seconds then add the shrimp. Cook over medium high heat until the tails on the shrimp curl. Reduce heat to medium and add the wine. Cook for three to five minutes, then add the pepper, scallions and parsley. Lower the heat and simmer a few minutes. Just before serving, remove from heat, add remaining 1/4 cup butter (optional) and fold in pasta. Bon Appetit!

## Safe Practices Provide Peace of Mind

Plant Health Care is a progressive and innovative approach to maintaining healthy and beautiful plants in our urban landscapes. It institutes the use of a variety of tactics and tools including cultural, physical, biological, and chemical control measures. All of these options are considered when treating sick plants, but often, high pest populations or levels of infection from disease are such that a chemical is the recommended treatment to bring the plant back to a healthy state.

When this is the case, we rely on the company's environmental conscience, the client's preferences or sensitivities, and our individual education and experience as Certified Pesticide applicators to decide which product to apply. Fortunately, many insects and diseases can be controlled with chemicals that have been designated by the Environmental Protection Agency as being on the lower end of the toxicity range. These products are labeled with the words 'Caution' or 'Warning' and constitute 94% of the chemicals that we stock and use on your property.



"Environmental Conscience"

Thankfully, we as consumers are cautious about being good stewards of our resources. This creates a buyer-focused view of chemical development. Over time, this allows our industry (through millions of dollars and very

A wider variety of products allows us to best treat and not over treat.

heavy research) to provide better products, with lower toxicity ratings to get better results. It is important to remember that the toxicity rating of a product is based on its purest form. However, by the time the product is applied on plants it is often in a field dilution making it hundreds or thousands of times lower than that pure form for which it was rated. As an example, the product Merit® Insecticide has a toxicity rating of 4870, or Almost Non-toxic (5000 and above), but it is diluted 42,000 times

before being sprayed on your trees or shrubs. Orthene® Tree and Ornamental Insecticide falls into the Slightly Toxic category, the same rating category as aspirin and table salt.

Many companies offer a set number of visits at set times and use broad-spectrum insecticide products in a blanket fashion. Our service differs by being individualized. We

have a wider variety of products available to our technicians, which allows us to best treat and not over treat. Using the best product on only the necessary plants with the proper timing specific to each property results in meeting the desired goals while minimizing product usage. Whenever prudent, we make proactive cultural changes to prevent unnecessary treatments.

We are thrilled to be on the cutting edge of the arboricultural practices to bring the safest care to your property.

by Becky Phillips

### To Do Now

- Fertilize your evergreens for a great spring push.
- Inspect broadleaf evergreens for winter injury (desiccation) & prune out damaged tissue.
- Call us to add shrub bed weed management to your current services.
- Interested in getting the newsletter via email? Save paper, communicate by email, please send us your email to: [nphc@icehouse.net](mailto:nphc@icehouse.net)

## A Cool Crowd

**The Gardeners of Spokane** is a group of gardening guru's who number about 70 people but always enjoy a new face. They even welcome Jr. & Sr. High students with an interest in gardening. Their monthly meetings, held on the third Thursday, offer informational speakers to meet their purpose of "teaching all aspects of gardening". These friendly green thumbs also enjoy additional training opportunities and a variety of field trips. They are real hands on people who have three greenhouses located at the famous Hutton Settlement just bursting with healthy plants. (See the calendar for sale dates) Their generosity is displayed by their efforts in supplying various community facilities with outdoor plantings. For information: call Don DeLuca, President: 509-468-2324.

## “Ask The Tree Care Experts”

### Q: How do I get my Rhodie to look green and glossy?

A: Rhododendrons require some specific care to look their best in the Inland Northwest.

Three keys are:

- **Sighting:** Protection from winter wind and hot afternoon sun is first and foremost.
- **Water:** Rhodies require consistently moist, free draining soil. Plants under eves can easily become drought stressed in winter.
- **Fertilizer:** Rhodies prefer an acidic soil; in our region some fertilizing and pH adjustment is often needed to resolve nutrient deficiencies. *by Ben Kappen*

“I’m thrilled with the outcome of the pruning. The “old girl” seems to stand taller and looks like she has many more years instead of looking half dead and scraggly. The neighbor appreciated her yard clean up and all your efforts to keep from damaging her property.”

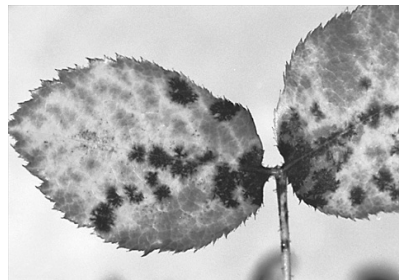
*M. F. , Spokane, WA*

### Q: I had Rose Black Spot on my roses last summer. What can be done to prevent this?

A: Rose Black Spot (*Marssonina rosae*) is a fungal disease affecting Rose leaves and canes.

Our recommendations are to:

- Rake and discard all fallen leaves in the spring
- Prune and discard any obviously infected canes
- Avoid wetting the foliage especially during cool and cloudy weather
- Grow plants in an open sunny location
- Avoid dense plantings and allow good air circulation
- Remove infected leaves as they arise
- Several fungicides are available for control of the disease and they are best applied preventatively. Always read and follow label directions
- Plant resistant varieties eg: “Old Fashion” (own root) Roses *by Ben Kappen*



**Marssonina rosae**



Who’s Hot?

Jeni Thorin Becky

## The Plant Care Team

It’s their time to SHINE!

Soon you will see these experts snooping around your beds, examining leaves, branches and roots to diagnose how healthy your plants are and what they can do to effectively improve their health and beauty. These professionals have a passion for plants, all with coursework or a degree from Spokane Community College in either Landscape, Flower Design, Greenhouse Management or all three specialties.

Through the winter, they have been taking courses, attending continuing education, delving into technical resources and evaluating various new treatments to give you the best, most complete service available. Their education and keen interest allows them to add to NPHC’s knowledge base and the success of your plants. You are part of their team, so make your desires, concerns and priorities known. Just like Joe and Ben, they love to “talk trees and plants” in order to resolve issues and improve health!

What’s Not!

## Herbicide Damage...

is a recurring problem we see when we are called out to diagnose an ill plant. Some symptoms to look for are puckering or wilted leaves, twisted needles or a yellow looking plant, which may have clear veins through the leaves. Herbicide damage to landscape plants and trees is typically traced to broadcast weed and feed applications to make our lawns green. Caution and awareness can prevent this issue. Call us if you need a diagnosis or assistance in bringing plants back to health through restorative practices.

## Northwest Plant Health Care, Inc.

P.O. Box 1978  
Post Falls, ID 83877  
509-892-0110  
208-687-2884



[www.NorthwestPlantHealthCare.com](http://www.NorthwestPlantHealthCare.com)

### Greener Rhodies

### Safe Practices Provide Peace of Mind

### Garden Expo

### Rose Black Spot

### Shrimp Bordelaise

### Curb Appeal

**Pruning - Removals - Planting - Transplanting  
Plant Health Care - Fertilizing - Targeted Applications**

## *Curb Appeal*

Ever drive through a neighborhood and have a house stop you dead in your tracks? Something about it draws your eye and sets it apart as more desirable than any other home in the neighborhood. That's curb appeal and it's probably the landscaping.

Experts suggest a homeowner should spend 10 - 20 percent of a home's value on landscaping. But that's only if you plan to live there for a while. What if you're thinking of selling? While your investment in your home's landscaping may be more like 1-2 percent, most real estate agents would agree that increasing curb appeal can add two to three times its investment to the home's sale price.

Certainly, you can do some of the work, but other work should be done professionally. When buyers see an overgrown, weedy yard, they wonder what kind of shape the rest of the house is in. So weed! Edge and reseed your lawn, fertilize and water so your grass is green

and healthy. Invest in annuals so your yard is tastefully colorful; spread fresh mulch. And if your yard doesn't already include flowerbeds, strategically add splashes of color with sumptuous planters.

Bushes and trees are another matter. It's important to have them properly pruned and, unless you're an expert, it's worth the money to hire a professional. Likewise, if your yard's visual appeal suffers from old, tired bushes that can't be effectively pruned, ask your landscape company to remove and replace them – the larger and more mature the replacement plant, the better.

If you can, plan ahead. Do you want to put your home on the market next season? Take action now to add flowers and prune. Select plants that bloom in the season you want to sell. Thoughtfully coordinate the colors of the plants and the colors in your home's exterior – if you've got a red door or an orange roof, don't plant pink tulips!



Your home is your largest financial investment. Spokane and Coeur d'Alene's real estate markets are predicted to remain strong in 2007 although with more modest growth than in the past two years. Maximize your home's marketability by adding some zing to your landscaping.



Thanks to our guest writer:  
**Olivette Orme,**  
Realtor, Windemere  
Real Estate  
**Olivette knows  
Spokane Homes!  
509-928-1991**